



SEAT Ibiza Range - Model Year 2012

SEAT Ibiza Range

- 4** Ibiza SC
- 6** Ibiza 5DR
- 8** Ibiza ST
- 10** Interior design
- 12** Interior quality & comfort
- 14** Special features
- 16** Engines
- 18** Ecomotive Technology
- 20** Safety
- 22** Trims
- 36** Option highlights
- 38** Equipment availability
- 40** Technical specifications
- 42** Main accessories
- 44** Upholsteries
- 46** Wheels
- 47** Colours
- 48** Club SEAT
- 50** Dimensions/Engines/Versions
- 51** SEAT information





SPORTY NEVER LOOKED SHARPER.

Contemporary and dynamic, the Ibiza SC is sport couture inspired by the runway and the motorway. In designing the Ibiza SC, we wanted something that was sleek and slim-fitting, but also extra large on features and detail. What we ended up with is a car that pleases both fashion gurus and performance lovers equally. But don't take our word for it, try one on for size – especially the Ibiza SC FR or Cupra. It's all you need to look the part this season.





WELCOME TO IBIZA 5DR.

It comes in many forms but you'll find the same commitment to perfection in every Ibiza. And because perfection can mean different things to different people, you'll find that every Ibiza is perfect in more ways than one: in form and practicality, in technology and performance. The result is an aesthetic masterpiece, a fusion of beauty and technology that will take driver and passenger on a unique journey.





SPACE TO EXPRESS YOURSELF.

The Ibiza ST is where beauty and technology come together with 138 litres of extra room. Because a lot can happen in the space of a day, the Ibiza ST gives you the freedom to bring what you want, where you want. And it all comes wrapped up in a refreshingly modern, sporty design that makes the Ibiza ST the most attractive in its segment. Hold on to your hat – and everything else you're bringing with you.







FASHIONABLE. FUNCTIONAL.

The Ibiza is all about offering the best of both worlds. Get your hands on the chunky steering wheel: you won't want to let go of it, which is why the audio controls are in easy reach on the steering column. Optional integrated Bluetooth® lets you operate your mobile by voice command¹. The combined USB/AUX-in port (CUP)² is iPod®³ compatible, and the stylish dash-board is supplied with an on-board trip computer⁴ that informs you of your average speed, fuel consumption and time spent on the road at the touch of a button.

¹ Depending on the phone type. For details of compatibility tested phones go to seat.co.uk.

² Standard on Sportrider, Cupra and Cupra Bocanegra, optional on SE Copa and FR models.

³ Connected via special cable available as an original SEAT accessory. For full iPod® integration and a charging facility, an additional adapter is required. Ask your local dealer for further details.

⁴ Standard on SE Copa models and above.





EASY ON THE EYES. AND THE KNEES.

Making the perfect space means more than just pleasing the eye: it means creating a mood in which you can relax and feel completely comfortable. Have a seat inside the Ibiza and you'll instantly appreciate its quality, detail and generous amount of leg room. Recline in fully adjustable front seats. Marvel at the attention to detail, like the finely stitched logos in the front seats¹. Adjust the climate control² to find your perfect cruising temperature. When everything is in its right place, you're left with a perfect setting for you and your passengers.

¹ On Ibiza FR, Cupra and Cupra Bocanegra models.

² Includes refrigerated glovebox. Standard on SE Copa models and above.



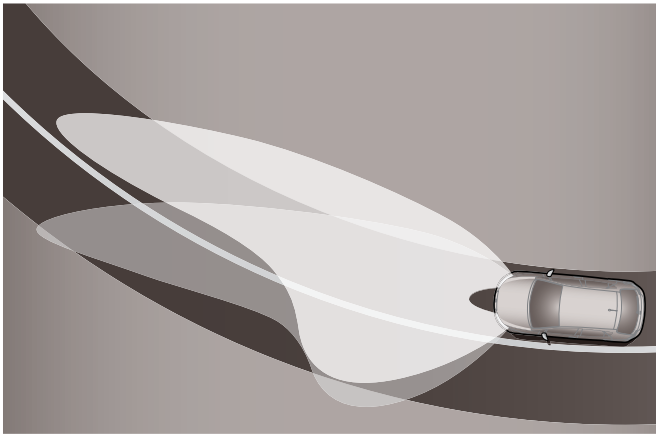
SPECIAL FEATURES



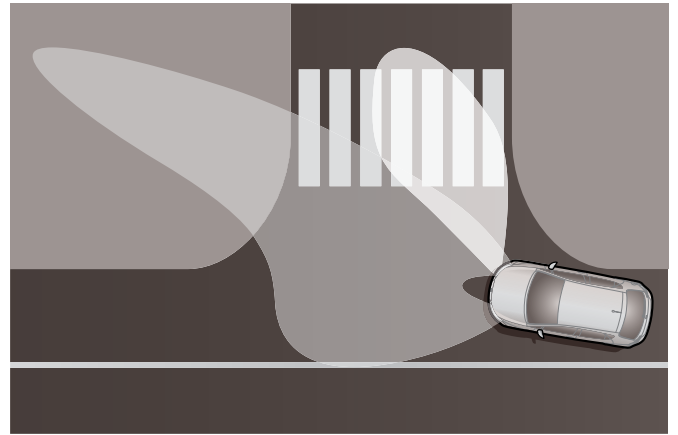
Bi-xenon headlights.



Front fog lights.



AFS headlights follow the direction of the steering wheel.



Front fog lights also have cornering function.



Cruise control.



Connect your iPod® via the combined USB/AUX-in port (CUP), with a special cable available as an original SEAT accessory. (For full iPod® integration and a charging facility, an additional adapter is required. Please contact your local dealer for more information).



Hill Hold Control applies the brake for two seconds, making hill starts easier.



Climate control allows you to set your perfect temperature.



Everything in its place in front seatback storage pockets.



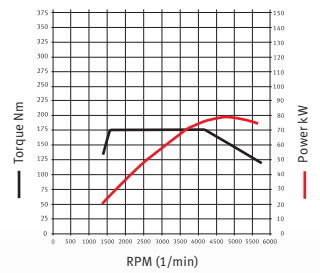
A box behind the rear seats can also be accessed from inside (part of the Storage Pack, Ibiza ST only).



An on-board trip computer lets you know the vehicle's average speed and fuel consumption at the touch of a button.

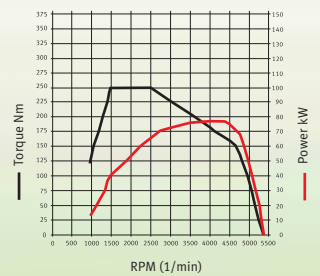


1.2 TSI 105PS (77 kW)



Our petrol models have never been cleaner. The 1.2 TSI 105PS with its Start/Stop and Energy Recovery Systems keeps CO₂ emissions to a very respectable 119 g/km.

1.6 TDI CR 105PS (77 kW)



The 1.6 TDI CR 105PS is just one example of how our diesel engines offer the best of both worlds: eco-conscious performance and outstanding fuel economy.

POWERFUL, YET RESPONSIBLE.

At the heart of the Ibiza you'll find a range of engines to stir up real emotion, and now they're cleaner and more fuel efficient than ever. This is thanks to advanced new features like Start/Stop and Energy Recovery Systems. It's technology like this that helps us find a balance between clean and mean, and it's how, for example, the 1.2 TSI can pump out 105PS while keeping emissions to a low 119 g/km. On the diesel side, this balance is maintained with engines like a 2.0 TDI CR (Common Rail) 143PS with 123 g/km of emissions, and 1.2 TDI CR 75PS with 102 g/km. Common Rail engineering not only makes the Ibiza quieter, but it also boosts performance while reducing fuel consumption and emissions. If you're searching for the ultimate green machine, look no further than the 1.2 TDI CR 75PS Ecomotive. With emissions of just 92 g/km, it's the most eco-conscious fun you can have on four wheels.

Thanks to a range of EU5 compliant petrol and diesel engines, the Ibiza models perform as impressively as they look. Using the latest technology, like a Start/Stop System, Energy Recovery System and Common Rail engineering, the Ibiza range delivers lively performance while being incredibly fuel efficient. Turn over for more information on how these technologies work.

PETROL	Urban driving	Extra urban	Combined	CO ₂ emissions
	mpg (l/100 km) 5DR // SC // ST	driving mpg (l/100 km) 5DR // SC // ST	consumption mpg (l/100 km) 5DR // SC // ST	(g/km) 5DR // SC // ST
1.2 60PS ¹	39.8 (7.1)	64.2 (4.4)	52.3 (5.4)	125
1.2 70PS ²	39.8 (7.1)	64.2 (4.4)	52.3 (5.4)	125
1.4 85PS	35.5 (8.0)	60.1 (4.7)	47.9 (5.9)	139
1.2 TSI 105PS	47.1 (6.0)	62.7 (4.5)	55.4 (5.1)	119
1.2 TSI 105PS DSG-auto	40.4 (7.0)	64.2 (4.4)	53.3 (5.3)	124
1.4 TSI 150PS DSG-auto ¹	34.9 (8.1)	53.3 (5.3)	44.8 (6.3)	146
1.4 TSI 180PS DSG-auto ¹	34.0 (8.3)	53.3 (5.3)	44.1 (6.4)	148

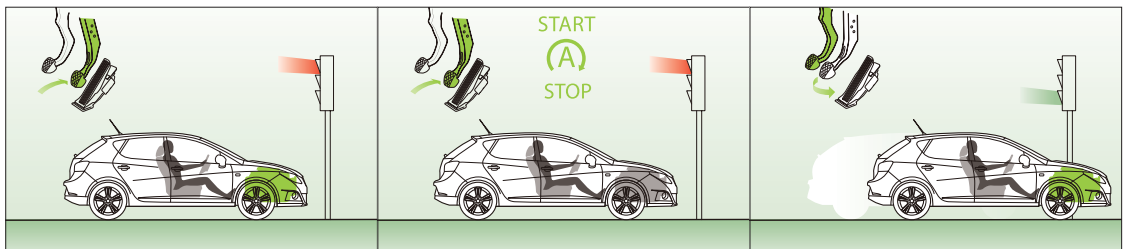
DIESEL	Urban driving	Extra urban	Combined	CO ₂ emissions
	mpg (l/100 km)	driving mpg (l/100 km)	consumption mpg (l/100 km)	(g/km)
1.2 TDI CR 75PS	58.9 (4.8) // 58.9 (4.8) // 57.6 (4.9)	83.1 (3.4) // 83.1 (3.4) // 80.7 (3.5)	72.4 (3.9) // 72.4 (3.9) // 70.6 (4.0)	102 // 102 // 105
1.2 TDI CR Ecomotive 75PS	67.3 (4.2)	91.1 (3.1)	80.7 (3.5)	92
1.6 TDI CR 105PS	52.3 (5.4)	78.5 (3.6)	65.7 (4.3)	112
2.0 TDI CR 143PS ²	47.1 (6.0)	70.6 (4.0)	60.1 (4.7)	123



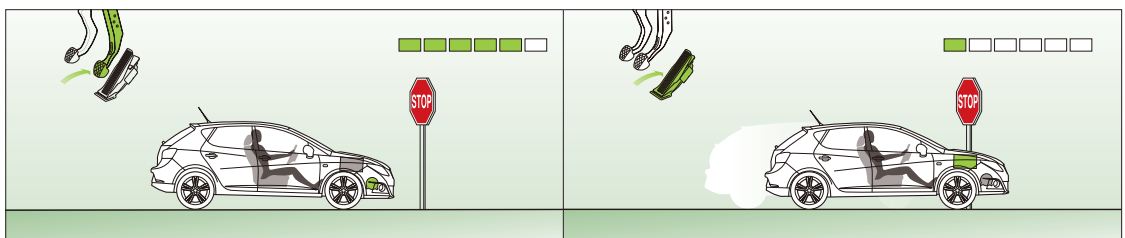


TECHNOLOGY THAT MAKES A DIFFERENCE.

Cutting emissions and fuel consumption is vitally important to us, which is why we've equipped the Ibiza 1.2 TSI 105PS manual and 1.2 TDI CR Ecomotive 75PS cars with the latest Ecomotive Technology. The first, a Start/Stop System, works by automatically stopping and starting the engine so it's only running when needed. For your convenience, the system can be de-activated at the push of a button. Another technology making a difference is an Energy Recovery System. During braking and coasting phases, this system controls the alternator to recover energy, then feeds it back into the electrical system during acceleration. As a result, emissions are reduced to 92 g/km and fuel consumption to 80.7 mpg for the 1.2 TDI CR 75PS Ecomotive engine. Both of these systems are particularly useful in the urban-driving conditions you find yourself in everyday. And they'll make you feel like you're doing your bit for the environment.



When the car is stopped, the gear lever set to neutral and clutch pedal is released, the Start/Stop System switches the engine off. Once the clutch is engaged again the engine starts automatically.



An Energy Recovery System works by varying the amount of power absorbed by the alternator. During braking, power which would otherwise be wasted is drawn into the electrical systems and battery. Under acceleration the alternator draws less energy, so more can be sent to driving the wheels. This system helps you reduce overall fuel consumption, and consequently the CO₂ emission level.



BECAUSE ITS MOST DELICATE CARGO IS YOU.

Style and safety go hand in hand inside the Ibiza range, and what could be more attractive than a 5 star Euro NCAP rating? That's no small feat. The list includes head and chest airbags for driver and passenger, optional tyre pressure monitoring, and Hill Hold Control, a handy feature that keeps the brakes engaged momentarily so you can take off on a hill like a pro. And because preventing an accident is the best feature of all, we offer our optional Electronic Stability Programme (ESP)* with XDS (electronic differential lock system). These systems monitor information from the steering wheel, tyres, brakes and accelerator, and make adjustments when necessary so you can stay in the perfect arc. And keep your cool.

*Standard on models that feature the Start/Stop System, FR, Cupra and Cupra Bocanegra.
XDS is included for engines with 100PS and above only.



SEAT IBIZA SC E

MAIN FEATURES

- 14" steel wheels with 'Coloso' wheel covers
- Black door handles and mirrors
- Body coloured bumpers with integrated mouldings
- Electrically adjustable headlights
- Rear fog light
- Electric front windows (one touch with anti-squeeze)
- Tinted glass
- Rear wash/wipe
- SEAT logo tailgate release
- Single-bulb front headlights
- Roof light
- MP3 compatible CD player
- FM/AM radio
- 4 speakers
- 12V power supply in centre console
- RPM counter
- Digital clock
- Instrument lighting with brightness control
- Low fuel warning light
- Lights-left-on warning buzzer
- Gearshift indicator
- Boot light
- Dust and pollen filter
- Height adjustable driver's seat
- Height and reach adjustable steering wheel
- Speed sensitive electro-mechanical power steering
- Height adjustable front headrests
- Two height adjustable rear headrests
- Front door storage pockets
- Driver & passenger sunvisors with vanity mirrors
- Three cup holders in cabin
- Folding rear bench seat
- 3 button folding key with remote window opening/closing functionality
- Driver and front passenger airbags
- Emergency tyre repair kit
- Head-thorax front side airbags
- Front passenger airbag de-activation
- Driver's seatbelt reminder
- ABS
- Three-point seatbelts on all rear seats
- Electronic engine immobiliser
- ISOFIX points in outer rear seats and Top Tether anchorage points
- Remote central locking with deadlocks
- Anti-theft roof antenna





SEAT IBIZA SC/5DR/ST S COPA

MAIN FEATURES

- Body coloured bumpers with integrated mouldings
- Roof rails in black (Ibiza ST only)
- Electric front windows (one touch with anti-squeeze)
- Tinted glass
- Single-bulb front headlights
- Electrically adjustable headlights
- MP3 compatible CD player
- 4 speakers
- 12V power supply in centre console
- RPM counter
- Gearshift indicator
- Boot light
- Dust and pollen filter
- Height adjustable driver's seat
- Height and reach adjustable steering wheel
- Speed sensitive electro-mechanical power steering
- Height adjustable front headrests
- Two height adjustable rear headrests
- Front door storage pockets
- Rear door storage pockets (Ibiza ST only)
- Storage under boot floor (Ibiza ST only)
- Cargo hooks and net in boot (Ibiza ST only)
- Box under driver's seat (Ibiza ST only)
- Front armrest storage (Ibiza ST only)
- Storage tray under parcel shelf (Ibiza ST only)
- Driver & passenger sunvisors with vanity mirrors
- Three cup holders in cabin
- 3 button folding key with remote window opening/closing functionality
- Driver and front passenger airbags
- Emergency tyre repair kit
- Head-thorax front side airbags
- Front passenger airbag de-activation
- Driver's seatbelt reminder
- ABS
- Three-point seatbelts on all rear seats
- Electronic engine immobiliser
- ISOFIX points in outer rear seats and Top Tether anchorage points
- Remote central locking with deadlocks
- Anti-theft roof antenna

And in addition to E:

- 15" 'Ingenia' alloy wheels
- Front fog lights with cornering function
- Body coloured door handles and mirrors
- Electrically adjustable and heated door mirrors
- Roof light with reading lights
- Front seatback storage pockets
- Cruise control
- Outside temperature gauge
- 12 volt power supply in boot (Ibiza ST only)
- AUX-in
- Split folding rear seats
- Steering column mounted audio controls
- Air conditioning
- Locking wheel bolts
- Volumetric alarm with back-up horn
- Child locks on rear doors (not on Ibiza SC)





Box under driver's seat on Ibiza ST only.

SEAT IBIZA SC/5DR/ST SE COPA

MAIN FEATURES

- Body coloured bumpers with integrated mouldings
- Body coloured door handles and mirrors
- Electrically adjustable and heated door mirrors
- Electric front windows (one touch with anti-squeeze)
- Tinted glass
- Front fog lights with cornering function
- Electrically adjustable headlights
- Cruise control
- MP3 compatible CD player
- 4 speakers
- AUX-in port
- Steering column mounted audio controls
- 12V power supply in centre console
- 12 volt power supply in boot (Ibiza ST only)
- Outside temperature gauge
- RPM counter
- Gearshift indicator
- Boot light
- Roof light with reading lights
- Dust and pollen filter
- Height adjustable driver's seat
- Split folding rear seats
- Height and reach adjustable steering wheel
- Speed sensitive electro-mechanical power steering
- Height adjustable front headrests
- Two height adjustable rear headrests
- Front seatback storage pockets
- Front door storage pockets
- Rear door storage pockets (Ibiza ST only)
- Storage under boot floor (Ibiza ST only)
- Cargo hooks and net in boot (Ibiza ST only)
- Box under driver's seat (Ibiza ST only)
- Front armrest storage (Ibiza ST only)
- Storage tray under parcel shelf (Ibiza ST only)
- Driver & passenger sunvisors with vanity mirrors
- Three cup holders in cabin
- 3 button folding key with remote window opening/closing functionality
- Driver and front passenger airbags
- Emergency tyre repair kit
- Head-thorax front side airbags
- Front passenger airbag de-activation
- Driver's seatbelt reminder
- ABS
- Three-point seatbelts on all rear seats
- Electronic engine immobiliser
- ISOFIX points in outer rear seats and Top Tether anchorage points
- Remote central locking with deadlocks
- Child locks on rear doors (not on Ibiza SC)
- Anti-theft roof antenna
- Locking wheel bolts
- Volumetric alarm with back-up horn

And in addition to S Copa:

- 15" 'Ibiza' alloy wheels (Ecomotive models)
- 16" 'Fabula' alloy wheels
- Twin-bulb front headlights
- Electrically folding door mirrors
- Trip computer
- Roof rails in chrome (Ibiza ST only)
- Leather steering wheel and gearknob
- Dark tinted rear windows
- Rain-sensing wipers
- Auto headlights
- Auto-dimming rear view mirror
- Coming home headlight function
- Climate control with refrigerated glovebox





SEAT IBIZA SC/5DR/ST SPORTRIDER

MAIN FEATURES

- Body coloured bumpers with integrated mouldings
- Roof rails in chrome (Ibiza ST only)
- Body coloured door handles and mirrors
- Electrically adjustable, heated and folding door mirrors
- Electric front windows (one touch with anti-squeeze)
- Dark tinted rear windows
- Tinted glass
- Front fog lights with cornering function
- Twin-bulb front headlights
- Electrically adjustable headlights
- Leather steering wheel and gearknob
- Climate control with refrigerated glovebox
- Rain-sensing wipers
- Auto headlights
- Auto-dimming rear view mirror
- Coming home headlight function
- Cruise control
- Trip computer
- MP3 compatible CD player
- 4 speakers
- Steering column mounted audio controls
- 12V power supply in centre console
- Outside temperature gauge
- RPM counter
- Gearshift indicator
- Boot light
- Roof light with reading lights
- Dust and pollen filter
- Height adjustable driver's seat
- Split folding rear seats
- Height and reach adjustable steering wheel
- Speed sensitive electro-mechanical power steering
- Height adjustable front headrests
- Two height adjustable rear headrests
- Front seatback storage pockets
- Front door storage pockets
- Rear door storage pockets (Ibiza ST only)
- Storage under boot floor (Ibiza ST only)
- Driver & passenger sunvisors with vanity mirrors
- Three cup holders in cabin
- 3 button folding key with remote window opening/closing functionality
- Driver and front passenger airbags
- Emergency tyre repair kit
- Head-thorax front side airbags
- Front passenger airbag de-activation
- Driver's seatbelt reminder
- ABS
- Three-point seatbelts on all rear seats
- Electronic engine immobiliser
- ISOFIX points in outer rear seats and Top Tether anchorage points
- Remote central locking with deadlocks
- Child locks on rear doors (not on Ibiza SC)
- Anti-theft roof antenna
- Locking wheel bolts
- Volumetric alarm with back-up horn

And in addition to SE Copa:

- 17" 'Saga' alloy wheels
- Sports seats
- Sports suspension
- Combined USB/AUX-in Port (CUP)
- Bluetooth® Communications Pack
- Rear parking sensors



Model shown with optional panoramic glass sunroof.





SEAT IBIZA SC / 5DR FR

MAIN FEATURES

- Body coloured bumpers with integrated mouldings
- Sports suspension
- Body coloured door handles
- Electrically adjustable, heated and folding door mirrors
- Electric front windows (one touch with anti-squeeze)
- Dark tinted rear windows
- Tinted glass
- Front fog lights with cornering function
- Twin-bulb front headlights
- Electrically adjustable headlights
- Leather steering wheel and gearknob
- Climate control with refrigerated glovebox
- Coming home headlight function
- Cruise control
- Trip computer
- MP3 compatible CD player
- 4 speakers
- AUX-in port
- Steering column mounted audio controls
- 12V power supply in centre console
- Outside temperature gauge
- RPM counter
- Gearshift indicator
- Boot light
- Roof light with reading lights
- Dust and pollen filter
- Height adjustable driver's seat
- Split folding rear seats
- Height and reach adjustable steering wheel
- Speed sensitive electro-mechanical power steering
- Height adjustable front headrests
- Two height adjustable rear headrests
- Front seatback storage pockets
- Front door storage pockets
- Driver & passenger sunvisors with vanity mirrors
- Three cup holders in cabin
- 3 button folding key with remote window opening/closing functionality
- Driver and front passenger airbags
- Head-thorax front side airbags
- Front passenger airbag de-activation
- Driver's seatbelt reminder
- ABS
- Three-point seatbelts on all rear seats
- Electronic engine immobiliser
- ISOFIX points in outer rear seats and Top Tether anchorage points
- Remote central locking with deadlocks
- Child locks on rear doors (not on Ibiza SC)
- Anti-theft roof antenna
- Locking wheel bolts
- Volumetric alarm with back-up horn

And in addition to Sportrider:

- 17" 'Aera' alloy wheels
- Silver painted door mirrors
- Exclusive FR-badged front and rear bumpers
- Twin chrome exhaust pipe
- Exclusive FR styling details
- Exclusive FR sports seats
- Electric rear windows (one touch with anti-squeeze, not on Ibiza SC)
- Steering wheel mounted paddle shift controls (DSG-auto only)
- Space-saving spare wheel
- ESP (Electronic Stability Programme) with EBA





SEAT IBIZA SC CUPRA

MAIN FEATURES

- Body coloured bumpers with integrated mouldings
- Sports suspension
- Body coloured door handles
- Electrically adjustable, heated and folding door mirrors
- Electric front windows (one touch with anti-squeeze)
- Dark tinted rear windows
- Tinted glass
- Front fog lights with cornering function
- Twin-bulb front headlights
- Electrically adjustable headlights
- Leather steering wheel and gearknob
- Climate control with refrigerated glovebox
- Coming home headlight function
- Cruise control
- Trip computer
- MP3 compatible CD player
- 4 speakers
- Steering column mounted audio controls
- Steering wheel mounted paddle shift controls (DSG-auto only)
- 12V power supply in centre console
- Outside temperature gauge
- RPM counter
- Gearshift indicator
- Boot light
- Roof light with reading lights
- Dust and pollen filter
- Height adjustable driver's seat
- Split folding rear seats
- Height and reach adjustable steering wheel
- Speed sensitive electro-mechanical power steering
- Height adjustable front headrests
- Two height adjustable rear headrests
- Front seatback storage pockets
- Front door storage pockets
- Driver & passenger sunvisors with vanity mirrors
- Three cup holders in cabin
- 3 button folding key with remote window opening/closing functionality
- Driver and front passenger airbags
- Head-thorax front side airbags
- Front passenger airbag de-activation
- Driver's seatbelt reminder
- ABS
- Three-point seatbelts on all rear seats
- Electronic engine immobiliser
- ISOFIX points in outer rear seats and Top Tether anchorage points
- Remote central locking with deadlocks
- Anti-theft roof antenna
- Space-saving spare wheel
- ESP (Electronic Stability Programme) with EBA
- Locking wheel bolts
- Volumetric alarm with back-up horn

And in addition to FR:

- 17" 'Sira' alloy wheels
- Gloss black door mirrors
- Exclusive Cupra-badged front and rear bumpers
- Centre-exit trapezoidal exhaust pipe
- Black roof lining
- Exclusive Cupra styling details
- Exclusive Cupra sports seats
- Combined USB/AUX-in Port (CUP)
- Bluetooth® Communications Pack



Model shown with optional bi-xenon headlights and Racing brakes.





SEAT IBIZA SC BOCANEGRA

MAIN FEATURES

- 17" 'Sira' alloy wheels
- Body coloured bumpers with integrated mouldings
- Sports suspension
- Centre-exit trapezoidal exhaust pipe
- Black roof lining
- Body coloured door handles
- Gloss black door mirrors
- Electrically adjustable, heated and folding door mirrors
- Electric front windows (one touch with anti-squeeze)
- Dark tinted rear windows
- Tinted glass
- Front fog lights with cornering function
- Twin-bulb front headlights
- Electrically adjustable headlights
- Leather steering wheel and gearknob
- Climate control with refrigerated glovebox
- Coming home headlight function
- Cruise control
- Trip computer
- MP3 compatible CD player
- 4 speakers
- Combined USB/AUX-in Port (CUP)
- Bluetooth® Communications Pack
- Steering column mounted audio controls
- Steering wheel mounted paddle shift controls (DSG-auto only)
- 12V power supply in centre console
- Outside temperature gauge
- RPM counter
- Gearshift indicator
- Boot light
- Roof light with reading lights
- Dust and pollen filter
- Height adjustable driver's seat
- Split folding rear seats
- Height and reach adjustable steering wheel
- Speed sensitive electro-mechanical power steering
- Height adjustable front headrests
- Two height adjustable rear headrests
- Front seatback storage pockets
- Front door storage pockets
- Driver & passenger sunvisors with vanity mirrors
- Three cup holders in cabin
- 3 button folding key with remote window opening/closing functionality
- Driver and front passenger airbags
- Head-thorax front side airbags
- Front passenger airbag de-activation
- Driver's seatbelt reminder
- ABS
- Three-point seatbelts on all rear seats
- Electronic engine immobiliser
- ISOFIX points in outer rear seats and Top Tether anchorage points
- Remote central locking with deadlocks
- Anti-theft roof antenna
- Space-saving spare wheel
- ESP (Electronic Stability Programme) with EBA
- Locking wheel bolts
- Volumetric alarm with back-up horn

And in addition to Cupra:

- Exclusive Bocanegra-badged front and rear bumpers
- Exclusive Bocanegra styling details
- Exclusive Bocanegra sports seats



Model shown with optional bi-xenon headlights and Racing brakes.





OPTION HIGHLIGHTS



Bluetooth®. Operate your mobile by voice command.
(Depending on the phone type. For details of compatibility tested phones go to seat.co.uk.).

Sp C CB SE Co FR



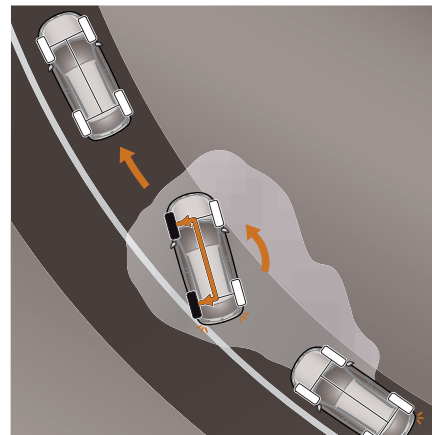
Box under driver's seat
(included in Storage Pack).

SE Co Sp



Navigation pre-installation for TomTom®¹.
(TomTom® not included).

S Co SE Co Sp FR C CB



Our ESP provides perfect composure around every curve
(includes XDS for models with 100PS or above).

E S Co² SE Co² Sp² FR C CB



Interior and exterior view of the panoramic glass sunroof
(in lieu of roof rails on Ibiza ST).

SE Co³ Sp FR C CB



Heated front seats
(included in Winter Pack).

SE Sp FR C CB



Bi-xenon headlights with AFS (Adaptive Front-lighting System).

Sp FR C CB



Racing brakes (Ibiza SC only).

C CB



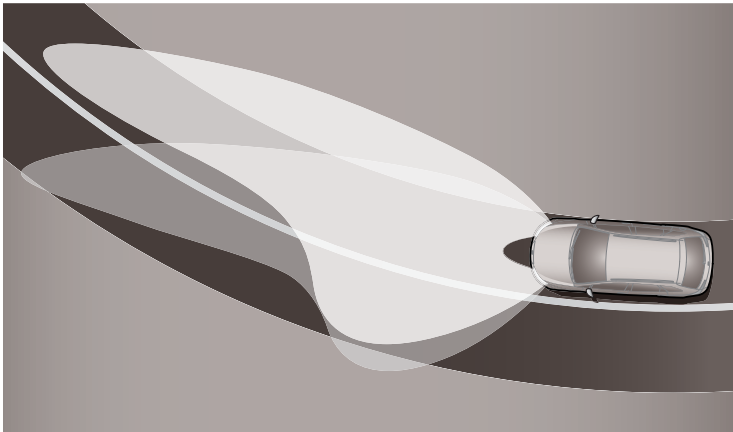
Extra safety comes in the form of a tyre pressure warning (requires ESP).

E S Co SE Co Sp FR C CB



Auto dimming rear view mirror (included in Convenience Pack).

SE Co Sp FR C CB



Adaptive Front-lighting System (always with bi-xenon headlights).

Sp FR C CB



Steering column controls (included in Bluetooth® Communications Pack).

Sp C CB SE Co FR

* Depending on the phone type. For details of compatibility tested phones go to seat.co.uk.

¹ Additional cradle required, available for V3 or V4/IQ Routes models. Please contact your local dealer for more information.

² Standard on engines with Start/Stop System only. Optional on other models.

³ Not available with the Ecomotive engine.

EQUIPMENT AVAILABILITY

EXTERIOR EQUIPMENT	E	S COPA	SE COPA	SPORTRIDER	FR	CUPRA	CUPRA BOCANEGRA
Single-bulb front headlights with electric adjustment	■	■	–	–	–	–	–
Twin-bulb front headlights with electric adjustment	–	–	■	■	■	■	■
Front fog lights with cornering function	–	■	■	■	■	■	■
Rear fog light	■	■	■	■	■	■	■
Black door handles	■	–	–	–	–	–	–
Body coloured door handles	–	■	■	■	■	■	■
Black door mirrors	■	–	–	–	–	–	–
Body coloured door mirrors	–	■	■	■	–	–	–
Silver painted door mirrors	–	–	–	–	■	–	–
Gloss black door mirrors	–	–	–	–	–	■	■
Heated door mirrors	–	■	■	■	■	■	■
Electrically adjustable door mirrors	–	■	■	■	■	■	■
Electrically folding door mirrors	–	–	■	■	■	■	■
Body coloured bumpers with integrated mouldings	■	■	■	■	■	■	■
Exclusive FR-badged front and rear bumpers	–	–	–	–	■	–	–
Exclusive Cupra-badged front and rear bumpers	–	–	–	–	–	■	–
Exclusive Bocanegra front and rear bumpers	–	–	–	–	–	–	■
Roof rails (Ibiza ST only)	n/a	Black	Chrome	Chrome	n/a	n/a	n/a
Tinted windows	■	■	■	■	■	■	■
Dark tinted rear windows	–	–	■	■	■	■	■
Rear wash/wipe	■	■	■	■	■	■	■
SEAT logo tailgate release	■	■	■	■	■	■	■
Twin chrome exhaust pipe	–	–	–	–	■	–	–
Centre-exit trapezoidal exhaust pipe	–	–	–	–	–	■	■
INTERIOR EQUIPMENT							
Driver and passenger sunvisors with vanity mirrors	■	■	■	■	■	■	■
Three cup holders in cabin	■	■	■	■	■	■	■
Roof light	■	–	–	–	–	–	–
Roof light with reading lights	–	■	■	■	■	■	■
Illuminated boot	■	■	■	■	■	■	■
Black roof lining	–	–	–	–	–	■	■
Exclusive FR styling details	–	–	–	–	■	–	–
Exclusive Cupra styling details	–	–	–	–	–	■	–
Exclusive Bocanegra styling details	–	–	–	–	–	–	■
SEATS & TRIMS							
Height-adjustable driver's seat	■	■	■	■	■	■	■
Height-adjustable front headrests	■	■	■	■	■	■	■
Two height-adjustable rear headrests	■	■	■	■	■	■	■
Front seatback storage pockets	–	■	■	■	■	■	■
Front door storage pockets	■	■	■	■	■	■	■
Rear door storage pockets (Ibiza ST only)	n/a	■	■	■	n/a	n/a	n/a
Storage under boot floor (Ibiza ST only)	n/a	■	■	■	n/a	n/a	n/a
Storage Pack: Includes cargo hooks and net in boot, box under driver's seat and front armrest. Ibiza ST also gains storage tray under parcel shelf and 12 volt power supply in boot	–	– / ■ ¹	□ / ■ ¹	□	–	–	–
Sports seats	–	–	–	■	–	–	–
Exclusive FR sports seats	–	–	–	–	■	–	–
Exclusive Cupra sports seats	–	–	–	–	–	■	–
Exclusive Bocanegra sports seats	–	–	–	–	–	–	■
Leather steering wheel and gearknob	–	–	■	■	■	■	■
Folding rear bench seat	■	–	–	–	–	–	–
Split folding rear seats	–	■	■	■	■	■	■
FUNCTIONAL & MECHANICAL							
Air conditioning	□	■	–	–	–	–	–
Climate control with refrigerated glovebox	–	–	–	■	■	■	■
Dust and pollen filter	■	■	■	■	■	■	■
Electric front windows (one-touch with anti-squeeze)	■	■	■	■	■	■	■
Electric rear windows (one-touch with anti-squeeze, not on Ibiza SC)	n/a	–	□	□	■	n/a	n/a
Height and reach adjustable steering wheel	■	■	■	■	■	■	■
Electro-mechanical power steering (speed-sensitive)	■	■	■	■	■	■	■
Cruise control	–	■	■	■	■	■	■
Rain-sensing wipers	–	–	■	■	△	△	△
Auto headlights	–	–	■	■	△	△	△
Rear parking sensors	–	–	–	■	△	△	△
Auto-dimming rear view mirror	–	–	■	■	△	△	△
Sports suspension	–	–	–	■	■	■	■
Steering wheel mounted paddle shift controls (DSG-auto only)	–	–	–	–	■	■	■
Coming home headlight function	–	–	■	■	■	■	■
12 volt power supply in centre console	■	■	■	■	■	■	■
12 volt power supply in boot (Ibiza ST only)	n/a	■	■	△	n/a	n/a	n/a
Start/Stop System	See technical specification data to see which engines feature these Ecomotive technology advancements.						
Energy Recovery System							
Aero Pack							

INSTRUMENTS PANEL	E	S COPA	SE COPA	SPORTRIDER FR	CUPRA	CUPRA BOCANEGRA
RPM counter	■	■	■	■	■	■
Trip computer	–	–	■	■	■	■
Digital clock	■	■	■	■	■	■
Instrument lighting with brightness control	■	■	■	■	■	■
Outside temperature gauge	–	■	■	■	■	■
Low fuel warning light	■	■	■	■	■	■
Lights-left-on warning buzzer	■	■	■	■	■	■
Gearshift indicator	■	■	■	■	■	■

INFOTAINMENT	E	S COPA	SE COPA	SPORTRIDER FR	CUPRA	CUPRA BOCANEGRA
MP3 compatible CD player	■	■	■	■	■	■
AUX-in port	–	■	■	–	■	–
Bluetooth® Communications Pack and Combined USB/AUX-in Port (CUP)²: Includes handsfree phone connection³ with voice control and two additional speakers	–	–	□	■	□	■
FM/AM radio	■	■	■	■	■	■
Four speakers	■	■	■	■	■	■
Steering column mounted audio controls	–	■	■	■	■	■

WHEELS & TYRES	E	S COPA	SE COPA	SPORTRIDER FR	CUPRA	CUPRA BOCANEGRA
14" steel wheels and 'Coloso' covers with 175/70 R14 tyres	■	–	–	–	–	–
15" 'Ingenia' alloy wheels with 185/60 R15 tyres	–	■	–	–	–	–
15" 'Ibiza' alloy wheels with 185/60 R15 tyres	–	–	Ecomotive	–	–	–
16" 'Fabula' alloy wheels with 215/45 R16 tyres	–	–	■	–	–	–
17" 'Saga' alloy wheels with 215/40 R17 tyres	–	–	–	■	–	–
17" 'Aera' alloy wheels with 215/40 R17 tyres	–	–	–	–	■	–
17" 'Sira' alloy wheels with 215/40 R17 tyres	–	–	–	–	–	■
Emergency tyre repair kit	■	■	■	■	–	–
Space-saving spare wheel	–	–	–	–	■	■

SAFETY & SECURITY	E	S COPA	SE COPA	SPORTRIDER FR	CUPRA	CUPRA BOCANEGRA
Driver and front passenger airbags	■	■	■	■	■	■
Front passenger airbag de-activation	■	■	■	■	■	■
Head-thorax front side airbags	■	■	■	■	■	■
Active front head restraints	■	■	■	■	■	■
ABS	■	■	■	■	■	■
Automatic warning lights	■	■	■	■	■	■
ESP (Electronic Stability Programme) with EBA⁴	□	□⁵	□⁵	□⁵	■	■
Volumetric alarm with back-up horn	–	■	■	■	■	■
Electronic engine immobiliser	■	■	■	■	■	■
Two 3-button folding keys with remote window opening/closing function	–	■	■	■	■	■
Driver's seatbelt reminder	■	■	■	■	■	■
ISOFIX points in rear seats with Top Tether anchorage points	■	■	■	■	■	■
Remote central locking with deadlocks	■	■	■	■	■	■
Child locks on rear doors (not on Ibiza SC)	n/a	■	■	■	n/a	n/a
3-point seatbelts on all rear seats	■	■	■	■	■	■
Locking wheel bolts	–	■	■	■	■	■
Anti-theft roof antenna	■	■	■	■	■	■
Visible VIN in windscreen	■	■	■	■	■	■

OPTIONS	E	S COPA	SE COPA	SPORTRIDER FR	CUPRA	CUPRA BOCANEGRA
Metallic Paint	□	□	□	□	□	□
Custom Palette Paint	–	□	□	□	□	–
Air conditioning	□	■	–	–	–	–
Racing brakes	–	–	–	–	□	□
Rear parking sensors	–	–	□	■	–	–
Bluetooth® Communications Pack and Combined USB/AUX-in Port (CUP)²: Includes handsfree phone connection³ with voice control	–	–	□	■	□	■
Bi-xenon headlights: Includes Adaptive Front-lighting System (AFS), headlight washer system and daytime running lights	–	–	–	□	□	□
Convenience Pack: Includes rear parking sensors, light sensor, rain-sensing wipers and auto-dimming rear view mirror	–	–	–	■	□	□
Winter Pack: Includes heated front seats, headlight washer system and heated front washer nozzles	–	□	□	□	□	□
Leather Seat Pack: Includes leather sports seats and all elements of the Winter Pack. Requires centre rear headrest	–	–	–	□	□	□
Storage Pack: Includes cargo hooks and net in boot, box under driver's seat and front armrest. Ibiza ST also gains storage tray under parcel shelf and 12 volt power supply in boot	–	–/■¹	□/■¹	□	–	–
Electric rear windows (one-touch with anti-squeeze, not on Ibiza SC)	n/a	–	□	□	■	n/a
ESP (Electronic Stability Programme) with EBA⁴	□	□⁵	□⁵	□⁵	■	■
Hill Hold Control and tyre pressure monitoring (requires ESP)	□	□	□	□	□	□
Height-adjustable front passenger seat (with Easy Entry on Ibiza SC)	–	□⁶	□⁶	□	□	□
Centre rear headrest	–	□	□	□	□	□
Panoramic glass sunroof (tilt-opening only, in lieu of roof rails on Ibiza ST)	–	–	□⁷	□	□	□
Navigation pre-installation for TomTom®⁸	–	□	□	□	□	□

¹ Standard on Ibiza ST only.

² For full iPod® integration and a charging facility, an additional adapter is required. Please contact your local dealer for more information.

³ For details of compatibility-tested phones go to seat.co.uk.

⁴ Models with 100PS and above also gain XDS (electronic differential lock system).

⁵ Standard on vehicles with Start/Stop System.

⁶ Not available with Ibiza ST 1.2 TDI CR Ecomotive model for weight-saving reasons.

⁷ Not available with 1.2 TDI CR Ecomotive models.

⁸ Only compatible with certain TomTom® models, and additional cradle also required. Please contact your local dealer for more information.

TECHNICAL SPECIFICATIONS

ENGINE	1.2 60PS (E) SC	1.2 70PS (S Copa) SC // 5DR	1.4 85PS (SE Copa / Sportrider) SC // 5DR // ST	1.2 TSI 105PS (Sportrider) SC // 5DR // ST	1.2 TSI 105PS DSG-auto (SE Copa / Sportrider) SC // 5DR // ST
Type (cylinders / valves per cylinder)	3 / 4	3 / 4	4 / 4	4 / 2	4 / 2
Displacement (cc)	1198	1198	1390	1197	1197
Bore and stroke (mm)	76.5 x 86.9	76.5 x 86.9	76.5 x 75.6	76.5 x 75.6	71 x 75.6
Compression ratio	10.5	10.5	10.5	10	10
Maximum power (PS / kW / rpm) ¹	60 / 44 / 5200	70 / 51 / 5400	85 / 63 / 5000	105 / 77 / 5000	105 / 77 / 5000
Maximum torque (Nm / lb.ft / rpm)	108 / 80 / 3000	112 / 83 / 3000	132 / 97 / 3800	175 / 129 / 1550	175 / 129 / 1550
Fuel supply system	Multi-point injection	Multi-point injection	Multi-point injection	Turbocharged direct injection	Turbocharged direct injection
Fuel type	Unleaded Petrol	Unleaded Petrol	Unleaded Petrol	Unleaded Petrol	Unleaded Petrol
Emission control	EU5	EU5	EU5	EU5	EU5
Start/Stop System	-	-	-	✓	-
Energy Recovery System	-	-	-	✓	-
Aero Pack	-	-	-	-	-

PERFORMANCE

Maximum speed ² (km/h)	96	101	110	118	118
Acceleration 0-62 mph (s)	15.9	13.9	11.8 // 11.8 // 12.4	9.8 // 9.8 // 10.2	9.7 // 9.7 // 10.0

FUEL CONSUMPTION³

Urban mpg (l/100 km)	39.8 (7.1)	39.8 (7.1)	35.3 (8.0)	44.8 (6.3)	40.4 (7.0)
Extra-urban mpg (l/100 km)	64.2 (4.4)	64.2 (4.4)	60.1 (4.7)	64.2 (4.4)	64.2 (4.4)
Combined mpg (l/100 km)	52.3 (5.4)	52.3 (5.4)	47.9 (5.9)	55.4 (5.1)	53.3 (5.3)

CO₂ EMISSIONS

Combined (g/km)	125	125	139	119	124
-----------------	-----	-----	-----	-----	-----

TRANSMISSION

Gearbox type	5 speed manual	5 speed manual	5 speed manual	5 speed manual	7 speed automatic
Ratios	I 3.769	3.767	3.767	3.767	3.764
	II 2.095	2.095	2.095	1.954	2.366
	III 1.281	1.281	1.387	1.281	1.575
	IV 0.926	0.926	1.025	0.927	1.111
	V 0.740	0.740	0.812	0.740	1.142
	VI -	-	-	-	0.944
	VII -	-	-	-	0.788
	R 3.181	3.181	3.181	3.181	4.280
Group 1 ratio	4.187	4.357	3.882	3.625	4.105
Group 2 ratio	-	-	-	-	3.120
Speed at 1000 rpm in IV/V/VI/VII (mph)	17.6/22.1/-/-	17.6/22.1/-/-	17.1/21.6/-/-	20.4/25.5/-/-	15/19.2/23.2/28.2

CHASSIS

Front suspension	Yes
Rear suspension	Semi-rigid rear axle with coil springs and hydraulic dampers
Steering system	Electro-mechanical power assisted
Turning circle diameter wall to wall (m)	10.48

BRAKING SYSTEM

Anti-lock Braking System (ABS)	ABS Standard, Option ESP (including HHC, EBA, TCS, EDS, RKA) + XDS (Standard CUPRA/FR)				
Type (front/rear)	Ventilated disc / drum	Ventilated disc / drum	Ventilated disc / drum	Ventilated disc / disc	Ventilated disc / disc
Front (mm)	256x22	256x22	256x22	256x22	256x22
Rear (mm)	200x40	200x40	200x40	232x9	232x9

WHEELS

Rims and tyres	See equipment availability pages
----------------	----------------------------------

DIMENSIONS

Length / width / height (mm)	4034 / 1693 / 1428 // 4052 / 1693 / 1445 // 4227 / 1693 / 1445
Wheelbase (mm)	2469
Track front / rear (mm)	1465 / 1457
Boot capacity (l)	284 // 292 // 430
Petrol tank capacity (l)	45

WEIGHTS

Kerb weight with driver (kg)	1049	1049	1075 // 1075 // 1130	1095 // 1095 // 1150	1115 // 1115 // 1165
Permissible gross weight (kg)	1500	1500	1526 // 1526 // 1570	1546 // 1546 // 1590	1566 // 1566 // 1585
Max. towing weight without brake (kg)	520	520	530 // 530 // 560	540 // 540 // 570	550 // 550 // 570
Max. towing weight with brake 12% (kg)	800	800	1000	1000	1000

¹ The maximum power output figures are quoted in PS (or Pferdestärke, which is the metric equivalent of horsepower). To convert from metric to imperial horsepower, divide the PS by 1.0139.

² Where law permits

1.4 TSI 150PS DSG-auto (FR) SC	1.4 TSI 180PS DSG-auto (Cupra / Bocanegra) SC	1.2 TDI CR 75PS (S Copa) SC // 5DR // ST	1.2 TDI CR Ecomotive 75PS (S Copa / SE Copa) SC // 5DR // ST	1.6 TDI CR 105PS (Sportrider) SC // 5DR // ST	2.0 TDI CR 143PS (FR) SC // 5DR
4 / 4	4 / 4	3 / 4	3 / 4	4 / 4	4 / 4
1390	1390	1199	1199	1598	1968
76.5 x 75.6	76.5 x 75.6	79.5 x 80.5	79.5 x 80.5	79.5 x 80.5	81.0 x 95.5
10	10	16.5	16.5	16.5	16.5
150 / 110 / 5800	180 / 132 / 6200	75 / 55 / 4000	75 / 55 / 4000	105 / 77 / 4400	143 / 105 / 4200
220 / 162 / 1250	250 / 184 / 2000	180 / 133 / 1500	180 / 133 / 1500	250 / 184 / 1500	320 / 236 / 1750
Turbocharged direct injection	Turbocharged direct injection	Common Rail direct injection	Common Rail direct injection	Common Rail direct injection	Common Rail direct injection
Unleaded Petrol	Unleaded Petrol	Diesel	Diesel	Diesel	Diesel
EU5	EU5	EU5	EU5	EU5	EU5
-	-	-	✓	-	-
-	-	-	✓	-	-
-	-	-	✓	-	-

132	140	104	107	117	130
7.6	7.2	13.9	13.9	10.5	8.2

34.9 (8.1)	34.0 (8.3)	58.9 (4.8) // 58.9 (4.8) // 57.6 (4.9)	67.3 (4.2)	52.3 (5.4)	47.1 (6.0)
53.3 (5.3)	53.3 (5.3)	83.1 (3.4) // 83.1 (3.4) // 80.7 (3.5)	91.1 (3.1)	78.5 (3.6)	70.6 (4.0)
44.8 (6.3)	44.1 (6.4)	72.4 (3.9) // 72.4 (3.9) // 70.6 (4.0)	80.7 (3.5)	65.7 (4.3)	60.1 (4.7)

146	148	102 // 102 // 105	92	112	123
-----	-----	-------------------	----	-----	-----

7 speed automatic	7 speed automatic	5 speed manual	5 speed manual	5 speed manual	6 speed manual
3.500	3.500	3.777	3.777	3.777	3.769
2.272	2.272	2.117	2.117	2.117	1.958
1.531	1.531	1.269	1.269	1.269	1.257
1.121	1.121	0.864	0.864	0.864	0.869
1.176	1.176	0.659	0.659	0.659	0.857
0.951	0.951	-	-	-	0.717
0.795	0.795	-	-	-	-
4.169	4.169	3.600	3.600	3.600	4.549
4.437	4.437	3.388	3.388	3.157	3.238
3.227	3.227	-	-	-	2.615
13.8/18.1/22.4/26.7	13.8/18.1/22.4/26.7	23.4/30.7/-/-	23.4/30.7/-/-	25.1/32.9/-/-	24.4/30.6/36.5/-

Ventilated disc / disc	Ventilated disc / disc	Ventilated disc / drum	Ventilated disc / drum	Ventilated disc / disc	Ventilated disc / disc
288x25	288x25	256x22	256x22	288x25	288x25
232x9	232x9	200x40	200x40	232x9	232x9

--	--	--	--	--	--

4072 / 1693 / 1424	4061 / 1693 / 1420	4034 / 1693 / 1428 // 4052 / 1693 / 1445 // 4227 / 1693 / 1445			4072 / 1693 / 1424 // 4088 / 1693 / 1441
--------------------	--------------------	--	--	--	---

1449 / 1441		1465 / 1457		1449 / 1441	
236	236	284 // 292 // 430		236 // 250	

1254	1259	1135 // 1135 // 1190	1150 // 1150 // 1205	1170 // 1170 // 1225	1245
1705	1685	1586 // 1586 // 1630	1586 // 1586 // 1645	1621 // 1621 // 1665	1696
620	n/a	560 // 560 // 590	570 // 570 // 600	580 // 580 // 610	620
1200	n/a	1000	1000	1000	1200

³ Official fuel consumption according to EU Directive 99/94. The consumption calculation according to 1999/100/EC is based on the actual unladen weight of the vehicle. Additional specifications can lead to a higher weight class and hence to consumption figures of this higher weight class. The driving style, road traffic conditions, environmental influences and vehicle condition can in practice lead to consumption figures which may differ from those calculated within this standard

MAIN ACCESSORIES



Ski/snowboard holder.
3B0071129F (holds up to four ski pairs or two snowboards)
3B0071129G (holds up to six ski pairs or four snowboards)

Detachable towbar.
6J0092000 (5DR/SC) / 6J8092155 (ST)



Front bumper spoiler / Side skirts / 17" silver diamant cut 5-spoke alloy wheels.
6J0071060 / 6J0071610 / 6J0071496



TomTom® One IQ routes, edition Europe and support cradle pack (only suitable with factory option TomTom® pre-installation).
000051818K



Decorative dashboard element in aluminum.
6J0064702



5-speed gearknob in aluminum and black / Handbrake cover in aluminum and black.
6J0064322 / 6J0064310



iPod® connection cable with support cradle (for iPod® classic, video, nano generation 5, touch and iPhone®) - iPod® not included. For vehicles with Combined USB/AUX-in Port (CUP) only.
6J0051700B

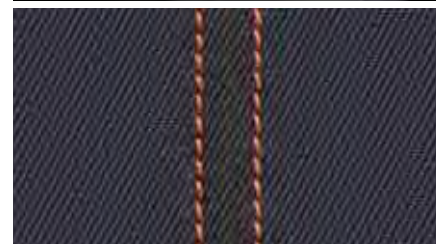


Protective boot tray.
6J0061201 (5DR/SC) / 6J8061201 (ST)



Luggage box (roof bars are required).
000071180A

UPHOLSTERIES



DG - Jeans

E



CS - Cloth ROAD

FR

**Some parts in black leatherette.
Please note: The print processes do not allow exact
reproduction of the upholstery and paint colours.*



DJ - Orion



Sp

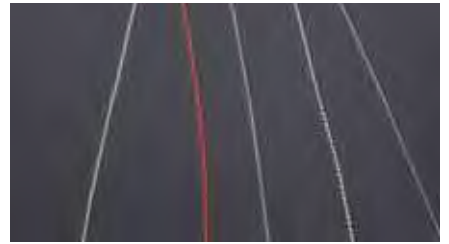
DJ + PLW - Black Leather*
CS + PLW - Black Leather*
AX + PLW - Black Leather*
22 + PLW - Black Leather*

Sp

FR

C

CB



34 - Copa
35 - Copa

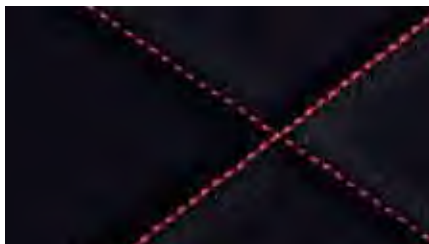
S Co

SE Co



AX - Cloth CONCEPT

C



22 PBN - Cloth CONCEPT Red

CB

WHEELS



14" steel wheel with 'Coloso' wheel cover **E**



15" 'Ingenia' alloy wheel **S Co**



15" 'Ibia' alloy wheel **SE Co E**



16" 'Fabula' alloy wheel **SE Co**



17" 'Saga' alloy wheel **Sp**



17" 'Aera' alloy wheel **FR**



17" 'Sira' alloy wheel **C CB**

COLOURS



White - B4B4 *Non-metallic*

ALL MODELS



Emoción Red - 9M9M *Non-metallic*

E S Co SE Co
Sp FR C



Crono Yellow - 6G6G¹ *Non-metallic*

E Sp FR C



Nevada White - 2Y2Y *Metallic*

E S Co SE Co
Sp FR C



Dakota Red - K8K8 *Metallic*

E Sp FR C CB



Ice Silver - P5P5 *Metallic*

E S Co SE Co Sp FR C



Monsoon Grey - 0C0C *Metallic*

E S Co SE Co Sp
FR C



Ada Blue - 7N7N *Metallic*

E Sp



Alba Blue - Z0Z0² *Metallic*

Sp



Balea Beige - L7L7² *Metallic*

Sp



Phantom Black - L8L8 *Metallic*

E S Co SE Co
Sp FR C



Tribu - 8R8R¹ *Custom Palette*

S Co SE Co Sp FR C



Speed Blue - 5N5N *Custom Palette*

Sp FR C





MEMBERSHIP IS FREE. THE REWARDS ARE PRICELESS.

SEAT is the place where real fans go to share their passion for all things about SEAT. As an exclusive member, you'll be the first to know about new car launches, the latest SEAT concept cars, and you'll be eligible to win fantastic trips and prizes too. Here are just some of the benefits you'll enjoy:

- **A chance to win tickets to world-class sporting events, like UEFA Europa League matches.**
- **The latest news and SEAT exclusives.**
- **VIP access to some of the biggest concerts.**
- **Tips and advice on how to care for your SEAT.**

Club SEAT is truly the all-in-one site for the SEAT fan. Best of all it's free to join. So sign up today at www.club-seat.co.uk and start receiving the Club SEAT newsletter – it explains all the benefits that membership will bring.

Get involved



UEFA EUROPA LEAGUE PRESENTED BY SEAT



DIMENSIONS



SEAT IBIZA 5DR



SEAT IBIZA SC



SEAT IBIZA ST

Dimensions are shown in millimetres (mm).

ENGINES/VERSIONS

PETROL	E	S COPA	SE COPA	SPORTRIDER	FR	CUPRA BOCANEGRA
1.2 60PS ¹	x	-	-	-	-	-
1.2 70PS ²	-	x	-	-	-	-
1.4 85PS	-	-	x	x	-	-
1.2 TSI 105PS	-	-	x	x	-	-
1.2 TSI 105PS DSG-auto	-	-	x	x	-	-
1.4 TSI 150PS DSG-auto ¹	-	-	-	-	x	-
1.4 TSI 180PS DSG-auto ¹	-	-	-	-	-	x

DIESEL

1.2 TDI CR 75PS	-	x	-	-	-	-
1.2 TDI CR Ecomotive 75PS	-	x	x	-	-	-
1.6 TDI CR 105PS	-	-	-	x	-	-
2.0 TDI CR 143PS ²	-	-	-	-	x	-

SEAT INFORMATION

The SEAT Warranty

Three-year Warranty. All new SEATs registered in the UK come with a three year/60,000 miles warranty, which protects your car against the failure of most mechanical and electrical components due to manufacturing defects. This comprises a two-year manufacturer's warranty with unlimited mileage plus a further one-year/60,000 (whichever is soonest) Dealer Warranty. Should the mileage exceed 0,000 miles within the first two years, the manufacturer's two-year warranty will still be valid. If an additional warranty for subsequent years or higher mileage is desired, it may be purchased from an authorised SEAT dealer or repairer, however, this additional warranty must be purchased before the mileage reaches 60,000. Cover is subject to the car being serviced and maintained according to the manufacturer's technical guidelines. Full details of the three-year warranty are available from your SEAT dealer or repairer.

Three-year Paint Warranty. The paintwork of the Ibiza 5dr, SC and ST is covered against manufacturing defects for a period of three years. Naturally, the Ibiza 5dr, SC and ST must be cared for in compliance with the operating instructions which will be found in your vehicle handbook. Please consult your authorised SEAT dealer or repairer for full warranty details.

Twelve-year Body Protection Warranty. The internal body sections and panels of the Ibiza 5dr, SC and ST are covered against rusting through from the inside for a period of twelve years. Naturally, the Ibiza 5dr, SC and ST must be cared for in compliance with the operating instructions which will be found in your vehicle handbook. Please consult your authorised SEAT dealer or repairer for full warranty details.

SEAT Parts Warranty. SEAT parts and accessories supplied after new vehicle delivery are covered by our 24 months parts warranty.

SEAT Accessories. Every accessory is designed specifically for SEAT and is fully tested to our high quality standards. All accessories unless otherwise stated come with a two year warranty, extended to three years when purchased and fitted prior to delivery of a brand new vehicle, and what's more, they can be fitted by SEAT approved technicians.

Specifications. Specifications for the Ibiza 5dr, SC and ST refer to Model Year 2012. While SEAT makes every effort to make sure that specifications are accurate at time of going to press (10/11), you should always check details with your SEAT dealer as there may have been changes in view of SEAT's policy of continuous product improvement. The right is reserved to change specification and colour at any time. The information in this brochure can therefore be given as guidance only.

SEAT Assistance (including European cover). Any new SEAT purchased and registered in the UK from an authorised SEAT dealer, is covered free by SEAT Assistance (including European cover) for roadside repairs or recovery to an authorised repairer for a term of two years. Your member of the SEAT authorised network will ensure that all servicing and repairs are carried out in accordance with the manufacturer's instructions. Terms and conditions apply.

SEAT Finance. SEAT Finance specialises in providing funding solutions for SEAT drivers. Whether your SEAT is for private or business use, you can choose from a range of funding options.

Here is our full range of finance products.

- Solutions – a personal contract plan
- Hire purchase • Lease purchase
- Finance lease • Contract hire

With all of our finance products you can choose one of our fixed-cost maintenance plans designed to help you budget accurately. No matter what finance product you choose, your local SEAT dealer will be able to provide you with a personalised quote that could meet your budget and vehicle needs. SEAT Finance is a trading name of Volkswagen Financial Services (UK) Limited. An offer of finance depends on certain conditions. Available to people over 18 in the UK only.

Test-Drive a SEAT. To arrange a test drive at your nearest dealer, or for any questions you may have about SEAT, visit our website at seat.co.uk or call us on FREEPHONE 0500 22 22 22.

Fuel Consumption Information. The Government fuel figures do not express or imply any guarantee of the fuel consumption of any particular vehicle. The individual vehicles have not been tested and there are inevitable differences between individual examples of the same model. In addition, a vehicle may incorporate particular modifications. Furthermore, the driving style and road and traffic conditions, as well as the extent to which the vehicle has been driven and the standard of maintenance, will affect its fuel consumption.

Vehicle Excise Duty and CO₂ Emissions. All vehicles first registered on or after 1st March 2001 are subject to a form of Vehicle Excise Duty (Road Fund Licence) based on the type of fuel the vehicle uses and its carbon dioxide (CO₂) emission level, measured in grammes per kilometre (g/km).

Optional Equipment. Throughout this publication, wherever a feature is described as being an 'Option' or 'Optional Fitment/Pack' etc, you should assume that it will be at extra cost to the base vehicle, unless specifically stated to the contrary. Any vehicle ordered with optional equipment (other than metallic paint) will be subject to a 12 week minimum delivery period.

SEAT Business Sales. SEAT Business Sales is committed to meeting all your fleet requirements and driver needs. For Fleet & Small Businesses please call our Fleet Business Centre directly to speak to our business advisors on 0800 096 2328 or email us at businesscentre@seatfleet.co.uk. For Fleet & Small Businesses please call our Fleet Business Centre directly to speak to our business advisors on 0800 096 2328 or email us at businesscentre@seatfleet.co.uk. For more information on SEAT Business Sales and the Business Sales Centre network, please visit the Business Sales area at seat.co.uk.





For SEAT owners & enthusiasts - all the latest SEAT news, exclusive offers & great events...

Get involved at www.club-seat.co.uk



SEAT is committed to a policy of continuous product development and reserves the right to make changes to specifications, colours and prices without notice. The information in this brochure can therefore be given as guidance only. While SEAT makes every effort to ensure that specifications are accurate at the time of publication (October '11), you should always check with your authorised SEAT dealership for the latest information. Due to limitations of the printing process the colours reproduced in this brochure may vary slightly from the actual paint colour and material. These vehicles and all their parts, as well as the original spares, were designed according to the Legal Regulations governing the prevention and minimisation of Environmental Impact, through the use of recycled/recyclable materials, with measures taken to achieve suitable recycling for the conservation and improvement of environmental quality. SEAT UK has made provision for the correct disposal and recycling* of all SEAT Vehicles when they are delivered by the customer to its national network of Environment Agency authorised treatment facilities. This service is offered at no cost to the last holder and applies to SEAT vehicles of any age which are substantially complete. The service is provided by Cartakeback.com and to find your nearest facility contact 0845 257 32 33 or browse to www.cartakeback.com.
*Since 2006 all vehicles returned to SEAT were certified by UK Government to be recycled to 85%. This brochure has been produced from Hello Silk paper which is Forest Stewardship Council certified.